

WATER LEAKAGE IN BATHROOM



• WHY THIS HAPPENS •

- Leakage of water through tile gaps.
- Leakage of water through drain outlet.
- Leakage of water through wall and floor junction area.

Solution

DR. FIXIT PIDIFIN 2K



• Why choose Dr. Fixit Pidifin 2K •



Creates a thick layer of 1 mm film thickness, which does not allow water to pass



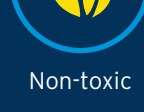
Excellent adhesion to concrete and masonry surfaces



Flexible coating accommodates cracks up to 1 mm with an elongation up to 50%



Excellent resistance to entry of water



Non-toxic

How to Apply



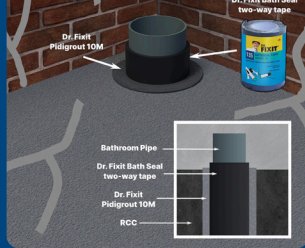
STEP 1

Remove all old tiles and clean surface up to RCC/brick work.



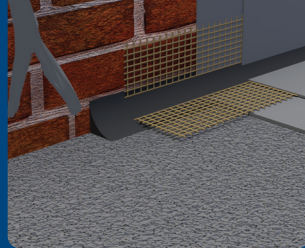
STEP 2A

All the cracks should be primed (1 URP:1 cement) and repaired with mortar modified with **Dr. Fixit Pidicrete URP** (10% of the weight of cement) at the cement:sand ratio of 1:3.



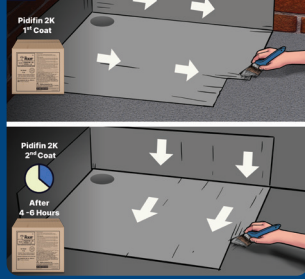
STEP 2B

Drain Outlet Pipe should be wrapped with **Dr. Fixit Bathseal** two-way tape and gap should be filled with **Dr. Fixit PidigROUT 10M**.



STEP 3

Clean wall and floor junctions and make angle fillet/watta with cement:sand ratio of 1:3 mortar admixed with **Dr. Fixit Pidicrete URP** (10% by weight of cement) at the junction of wall and floor. Lay 150 mm wide 45 GSM Glass fibre mesh at the angle fillet portion in wet condition over the first coat.



STEP 4

Apply 2 coats of **Dr. Fixit Pidifin 2K** @6 sq.ft/kg with an interval of 4-6 hrs. Each coat should be applied in perpendicular direction to each other. Apply the coating on the mother slab and continue up to 1000 mm above Finish floor level (FFL) on the Wall.



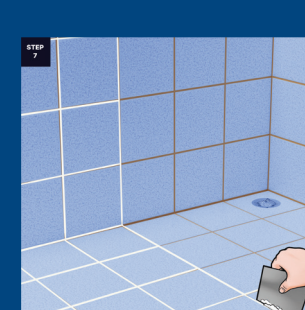
STEP 5

Apply a bond coat (1 part cement + 1 part URP + 1 part coarse sand) and let it dry for 4-6 hrs.



STEP 6

Apply 12-15 mm protective plaster (1 part cement + 3 parts sand) on top with **Dr. Fixit Pidiproof LW+** (200 mL per bag of cement).



STEP 7

Proceed for tile fixing with Dr. Fixit/Roff tile adhesive and tile grouts to fill the tile gaps.