

DAMP PATCHES ON INTERNAL WALLS



• WHY THIS HAPPENS •

- Moisture travels from floor to the wall, causing dampness
- Failed tile grout joints/cracks on other side of wall can result in water seepage
- Defects/cracks in external wall may lead to water seepage into internal walls

Solution

DR. FIXIT SURESEAL



• Why choose Dr. Fixit Sureseal •



Stop leaks in 4 hrs



Excellent adhesion to plaster surface



Flexible coating can fill cracks



Tintable in pastel shades



Easy to apply & dries faster, allowing for quicker work



Non-toxic

• How to Apply •

STEP 1

Refill tile joints of bathroom & kitchen with **Dr. Fixit Fevimate TG** (non-shrink tile grout) if you notice water seepage coming from such areas.



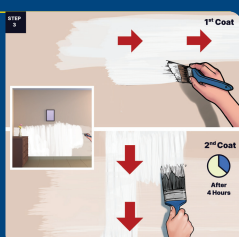
STEP 2

Clean internal plaster surface, remove neroo, POP or paint from walls.



STEP 3

Apply 2 coats of **Dr. Fixit Sureseal** without any dilution, maintaining coverage of 20-25 sq. ft /kg /2 coats. Allow first coat to dry for approx. 4 hrs before applying second coat at 90° to the first coat.



STEP 4

For providing smooth aesthetic finish, over the coating of Dr. Fixit "SureSeal " apply white cement based premium quality putty by adding **Dr. Fixit Pidicrete URP** (3-5 % by weight) of white cement Putty.

