

# RIISING WATER DAMPNESS



## • WHY THIS HAPPENS •

- Moisture travels from the below-ground soil due to higher ground water level.
- No damp proofing or damage to damp proofing treatment done for below-ground structures.

## Solution

### DR. FIXIT PIDIFIN 2K



## • Why choose Dr. Fixit Pidifin 2K •



Excellent resistance to entry of water



Excellent adhesion to concrete and masonry surfaces



Flexible coating up to 50% elongation offering excellent waterproofing



Non-toxic

## • How to Apply •

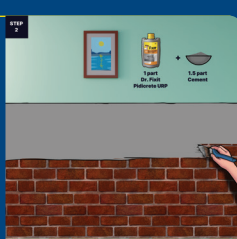
### STEP 1

Remove and clean affected area to expose the surface up to brick level.



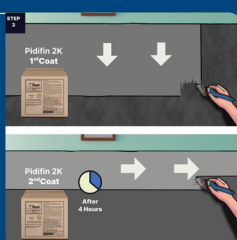
### STEP 2

Apply 1 coat of **Dr. Fixit Pidicrete URP** mixed with cement in the ratio of 1:1.5 (1 part URP : 1.5 cement) @ 20 sq.ft/kg on the affected area & extend to the wall up to 2 ft. above the affected area.



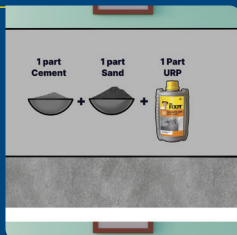
### STEP 3

Apply 2 coats of **Dr. Fixit Pidifin 2K** @ 6 sq.ft/kg with an interval of 4-6 hrs. Apply 2nd coat at 90° to the 1st coat.



### STEP 4

Apply a bond coat (1 part Cement + 1 part URP + 1 part coarse sand) and let it dry for 4-6 hours.



### STEP 5

Apply 12-15 mm protective plaster (1 part cement + 3 part sand) on top with **Dr. Fixit Pidiproof LW+** (200 ml per bag of cement).

