

DAMP PATCHES & LEAKAGE FROM ROOF



• WHY THIS HAPPENS •

- Exposure to harsh weather and changes in temperature lead to cracks in roof
- Cracks on parapet lead to seepage inside the house
- Cracks & poor finish on wall and floor junction result in leakage
- Improper terrace slope can lead to leakage

Solution

DR. FIXIT NEWCOAT



• Why choose Dr. Fixit Newcoat •



Provides higher dry film thickness of 1 mm in three coat applications



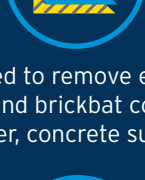
Higher tensile strength, tear resistance & bond strength with cementitious substrates



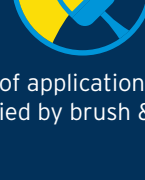
Bridges cracks up to 2 mm



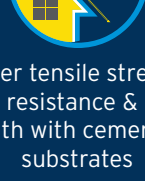
Resistant to UV rays & weather condition



No need to remove existing sound brickbat coba, plaster, concrete surface



Ease of application: can be applied by brush & roller



Higher tensile strength, tear resistance & bond strength with cementitious substrates

• How to Apply •



STEP 1

Surface must be clean, sound condition to ensure adequate adhesion.



STEP 2

Ensure that roof slope of a minimum of 1 in 100 is already provided.



STEP 3

Repair debonded screed and cracks with PMM (polymer-modified mortar) in the 1:3 (1 Part Cement : 3 Part Sand) ratio mixed with **Dr. Fixit Pidicrete URP** @ 10% by weight of cement.



STEP 4

Dilute 2 parts **Dr. Fixit Primeseal** with 1 one part water. This should cover 80-100 sq.ft area. Allow it to dry for 6-8 hrs.



STEP 5

Apply 1st coat of **Dr. Fixit Newcoat** @ 2 sq.mt/litre (make grid lines of 1 mtr x 1 mtr on the surface with chalk for measuring application coat of 2 sq. mt.)



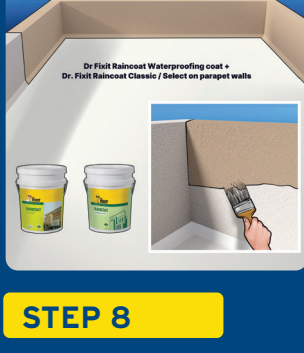
STEP 6

Open woven 45 GSM Glass fiber mesh of 2.5 mm x 2.5 mm must be sandwiched between 1st and 2nd coat.



STEP 7

Apply 2nd (2 sq.mt/litre) and 3rd coat of Newcoat (2 sq.mt/litre) at an application direction that is perpendicular to that of the 2nd coat, delivering a total DFT of 1 mm.



STEP 8

Apply Dr. Fixit Raincoat system (Dr. Fixit Waterproofing coat + Dr. Fixit Raincoat Classic/Select Topcoat) on parapet walls to achieve comprehensive roof waterproofing.

Important Note : Apply Dr. Fixit Primeseal Plus for application of Nonporous surfaces like, Marble, Granite, Glazed ceramic tiles and Clay tiles. Not recommended for application on Kota stone, Kadappa stone, Porous Brickbat.